

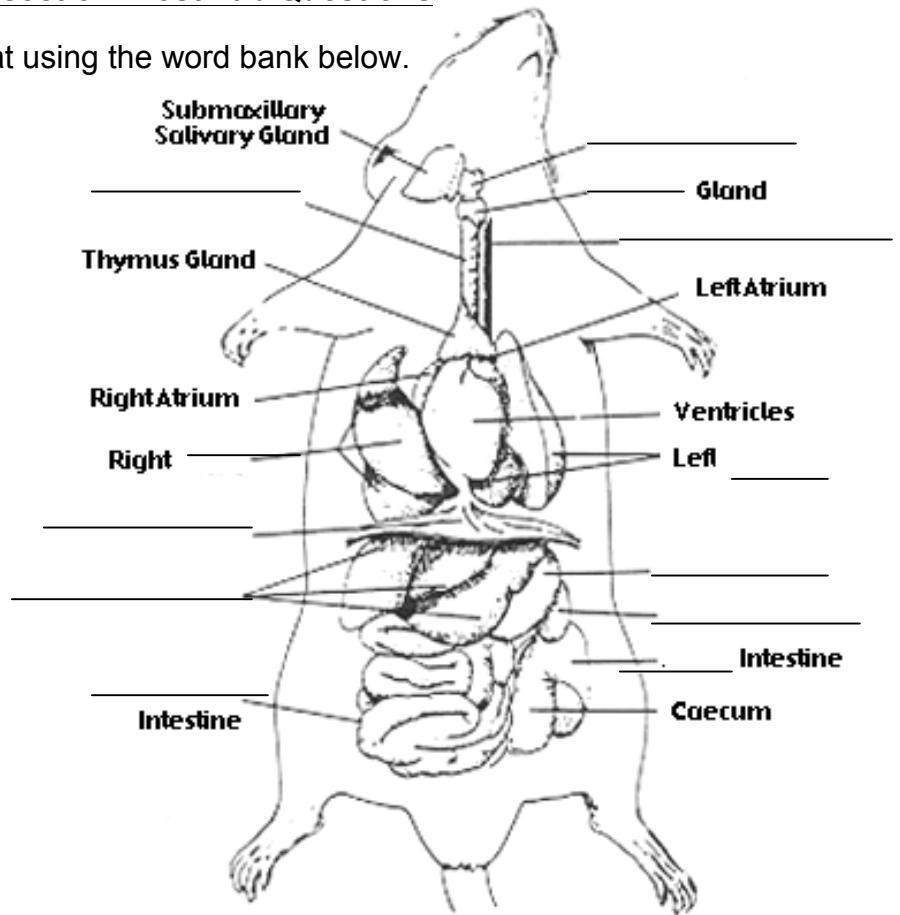
Name: _____

Date: _____

Rat Dissection: Post Lab Questions

Label the internal diagram of the rat using the word bank below.

Diaphragm
Esophagus
Large
Larynx
Liver
Lung (use twice)
Small
Spleen
Stomach
Thyroid
Trachea



Analysis/Discussion Questions

1. Discuss the similarities and differences between the digestive systems of the rat and earthworm.
2. In what way is the tail different from the rest of the body?
3. You will be writing a blog post on your rat dissection. You will be using the pictures and the data you collected to write a journal entry tomorrow. The **email** you will be sending your pictures to: mssmithsanatomyclass@gmail.com **password:** h.w.byers. Here are some things to think about when writing your blog:
 - How does this organism accomplish the following **life functions**: feeding, respiration, movement, reproduction, internal transport, excretion, and response.
 - **Habitat / Ecology** - Where does this organism live? How does it fit in the world? What impact does it have on the environment or other organisms?
 - Write a thoughtful conclusion to your lab investigation. The conclusion is your chance to discuss the results from the lab. What were the results? Why are the results significant? How do you know what you know? What conclusions can be drawn from the experiment? What can you say about what happened in the lab? This is your chance to summarize the results of the lab **IN YOUR OWN WORDS**, and discuss any implications of your results. (In other words, what actually happened in the lab...and did you accomplish the purpose of the lab?) This is the most important section of your lab report. Your conclusion is more than just answering the questions!